

Lwowska Naukowa Biblioteka im. W. Stefanyka NAN Ukrainy. Oddział
Rękopisów. Zespół (fond 141 opis 1).
ZBIORY ALEKSANDRA CZOŁOWSKIEGO

713. Wyciągi z inwentarza dóbr Kossakowskich – Łosiacz. 1806.

STRONY NIEZAPISANE NIE ZOSTAŁY ZDIGITALIZOWANE

Narwiska Miysca

Osiadlosc

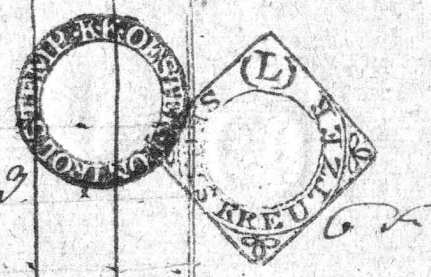
Catogontow
Potgontow
Cwirerogontow
Chalupnicy
Pamianicy
Pr. Baryshay

Imiona
Podanych

Caloroerne Lowinnosci

| Panszczyzna | | | Czynsze | | Drob. Molki | | Kogowiszczyna | | | | | | Bucoly | | | |
|--------------|--------|------|-------------|----------|--------------|------|---------------|----------|---------------------|------|-------|-------|----------------|-------|--------|-------|
| Cigla | | Wasa | | | Drob. | | Molki | | Konie | | Pudla | | Gazym Cwica | | Bucoly | |
| Parowa | Pozyma | | La Miodobna | Banuczyn | Kury | Jaja | Molki | Oziwiana | Owca | Kone | Wolny | Wolny | Wolny | Wolny | Wolny | Wolny |
| a. | | | | | . | | . | | . | | . | | . | | . | |
| Gro Polskich | | | La Miodobna | | Gro Polskich | | Ltp pod. | | Gro Polskich sp. 90 | | | | | | | |
| Q nie | | | Zp. gr. | | Ltp. 90 | | Ltp. 90 | | Ltp. 90 | | | | | | | |

| | | | | | | | | | | | | | | | | |
|---|----|--------------------|----|---|----|---|---|---|---|---|---|---|---|---|---|--|
| 1 | 29 | Stefan Wasylkow | 81 | 2 | 10 | 2 | 2 | 2 | 1 | 1 | 2 | | | | | |
| 1 | 30 | Tomko Maczkow | 81 | 2 | 10 | 2 | 2 | 2 | 1 | 2 | 2 | | | | | |
| 1 | 31 | Szymko Krystkow | 81 | 2 | 10 | 2 | 2 | 2 | 1 | 2 | | | | | | |
| 1 | 32 | Maczk Szymkow | 81 | 2 | 10 | 2 | 2 | 2 | 4 | 2 | 2 | | | 1 | 8 | |
| 1 | 33 | Szymko Poszkow | 81 | 2 | 10 | 2 | 1 | 2 | 2 | 1 | | | | | | |
| 1 | 34 | Jwan Serzha | 81 | 2 | 10 | 2 | | 4 | 1 | 2 | | | | | | |
| 1 | 35 | Ignacy Andrucho | 81 | 2 | 10 | 2 | 2 | 2 | 2 | 2 | 2 | | | | | |
| 1 | 36 | Tomko Derbisz | 81 | 2 | 10 | 2 | 2 | 2 | 2 | 1 | 1 | 2 | 2 | | | |
| 1 | 37 | Jwan Beryh | 81 | 2 | 10 | 2 | | 4 | 1 | 2 | 6 | 8 | 8 | | | |
| 1 | 38 | Jakob Janicki | 81 | 2 | 10 | 2 | 2 | 1 | | 2 | | | | | | |
| 1 | 39 | Symoncha Zacharowa | 81 | 2 | 10 | 2 | | | | | | | | | | |
| 1 | 40 | Jasko Krystkow | 81 | 2 | 10 | 2 | | | | | | | | | | |
| 1 | 41 | Michajto Mauryzn | 81 | 2 | 10 | 2 | 2 | 2 | 2 | 4 | 4 | | | | | |
| 1 | 42 | Wasyl Bednarczuk | 81 | 2 | 10 | 2 | 2 | 1 | 1 | 3 | | | | | | |
| 1 | 43 | Szymko Woytkow | 81 | 2 | 10 | 2 | 1 | 1 | 2 | 1 | 5 | 5 | 2 | 1 | 8 | |
| 1 | 44 | Jwas Kuscha | 81 | 2 | 10 | 2 | 2 | | | 2 | | | | | 3 | |
| 1 | 45 | Jwas Samulak | 81 | 2 | 10 | 2 | 2 | 1 | | | 4 | | | | | |
| 1 | 46 | Jahim Shahun | 81 | 2 | 10 | 2 | | | | | | | | | | |
| 1 | 47 | Wawro Dawidow | 81 | 2 | 10 | 2 | 2 | 2 | 2 | 2 | 2 | 2 | 1 | 1 | | |
| 1 | 48 | Woytko Dawidow | 81 | 2 | 10 | 2 | | | | | | | | | | |
| 1 | 49 | Anton Andruchow | 81 | 2 | 10 | 2 | | | | | | | | | | |
| 1 | 50 | Woytko Lucyryn | 81 | 2 | 10 | 2 | | | | | | | | | | |
| 1 | 51 | Petro Kinal | 81 | 2 | 10 | 2 | 2 | 2 | | 1 | | | | | | |



29 1862 40 230 46 26 2 28 20 25 21 25 10 28

Caloroczne Powinności

Smiona Podanych

Osiadłość

Narwiszka Mieysca

Calogrontow

Polgrontow

Cwiercgrontow

Chalupniy.

Pomarnicy

Nr 100

101

102

103

104

105

106

107

108

109

110

111

112

113

114

115

116

117

118

| Panszczyzna | | | Czynsze | Drob. Molki | | Rogowosciężna | | | | | | Bucaly | | |
|--------------|--------|--------|---------------|-------------|---------------------------|---------------|------------|--------|---------------------|---------|--------|--------|--------|--------|
| Ciągła | Własna | Własna | | Drob. | Molki | Koni | | Pysła | | Górnica | | Bucaly | | |
| Własna | Własna | Własna | Własna | Własna | Własna | Własna | Własna | Własna | Własna | Własna | Własna | Własna | Własna | Własna |
| a. | | | La Miedziakna | Polowego od | . | | . | | . | | . | | . | |
| Gro Polskich | | | La Miedziakna | Polowego od | Gro. Pol. skł. | | Lb. prodo. | | Gro Polskich sp. 90 | | Bucaly | | Bucaly | |
| Dnie | | | Zp. gr. | Zdp. gr. | Sztuk. Ropy Sztuk. Sztuk. | | Szt. u ki. | | | | Bucaly | | Bucaly | |

| | | | | | | | | | | | | | | |
|---|-----|--------------------|----|---|---|---|---|---|---|---|---|---|---|---|
| 1 | 95 | Matko Ducuszyn | 52 | 1 | 6 | 1 | 2 | 1 | 4 | | | | | |
| 1 | 96 | Matko Andruschow | 52 | 1 | 6 | 1 | | | | | | | | |
| 1 | 97 | Michajto Sobciow | 52 | 1 | 6 | 1 | | 2 | 1 | | | | 3 | |
| 1 | 98 | Strynko Senisryn | 52 | 1 | 6 | 1 | | | | | | | | |
| 1 | 99 | Dymitra Sobczukow | 52 | 1 | 6 | 1 | | | 1 | | | | | |
| 1 | 100 | Strynko Bednarsukh | 52 | 1 | 6 | 1 | | | 1 | 2 | | | | |
| 1 | 101 | Wasyl Sotys | 52 | 1 | 6 | 1 | 2 | 1 | 2 | 2 | | | | |
| 1 | 102 | Andrusk Kondra | 52 | 1 | 6 | 1 | | | 2 | | | | | |
| 1 | 103 | Maaym Setafshow | 52 | 1 | 6 | 1 | | | 1 | | | | | |
| 1 | 104 | Strycho Maaymow | 52 | 1 | 6 | 1 | 1 | | 2 | 1 | | | | |
| 1 | 105 | Maaym Winiarski | 52 | 1 | 6 | 1 | | | | | | | | 5 |
| 1 | 106 | Partha Marcinow | 52 | 1 | 6 | 1 | | | 1 | | 3 | | | |
| 1 | 107 | Olexa Kietbasich | 52 | 1 | 6 | 1 | | | 2 | 1 | 1 | | | |
| 1 | 108 | Mihita Bednarsukh | 52 | 1 | 6 | 1 | | | | | | | | |
| 1 | 109 | Jaske Wawryk | 52 | 1 | 6 | 1 | 1 | 1 | 1 | | 3 | | | |
| 1 | 110 | Demko Pojan | 52 | 1 | 6 | 1 | | | | | | | | |
| 1 | 111 | Anton Kasnier | 52 | 1 | 6 | 1 | | | 2 | 1 | 3 | | | |
| 1 | 112 | Dymitra Stryczkow | 52 | 1 | 6 | 1 | 1 | | | | | | | |
| 1 | 113 | Mateusz Jacyzyn | 52 | 1 | 6 | 1 | | | | | | | | |
| 1 | 114 | Woytko Kluch | 52 | 1 | 6 | 1 | | | 2 | | 1 | 1 | 6 | |
| 1 | 115 | Dymitra Stefanow | 52 | 1 | 6 | 1 | | | 2 | 1 | 2 | | 4 | |
| 1 | 116 | Walke Wryshow | 52 | 1 | 6 | 1 | 2 | | 1 | 1 | | | | |
| 1 | 117 | Petro Swancuzyn | 52 | 1 | 6 | 1 | | | 1 | 3 | 1 | 2 | | |
| 1 | 118 | Mihita Bednarsukh | 52 | 1 | 6 | 1 | | | | | | | | |

| | | | | | | | | | | | | | | |
|----|------|--|--|----|-----|----|---|---|----|----|----|---|---|----|
| 24 | 1248 | | | 24 | 144 | 24 | 9 | 2 | 12 | 15 | 20 | 8 | 3 | 21 |
|----|------|--|--|----|-----|----|---|---|----|----|----|---|---|----|

Skanowanie i opracowanie graficzne na CD-ROM :



ul. Krzemowa 1

62-002 Suchy Las

www.digital-center.pl

biuro@digital-center.pl

tel./fax (0-61) 665 82 72

tel./fax (0-61) 665 82 82

Wszelkie prawa producenta i właściciela zastrzeżone.

Kopiowanie, wypożyczenie, oraz publiczne odtwarzanie w całości lub we fragmentach zabronione.

All rights reserved. Unauthorized copying, reproduction, lending, public performance and broadcasting of the whole or fragments prohibited.